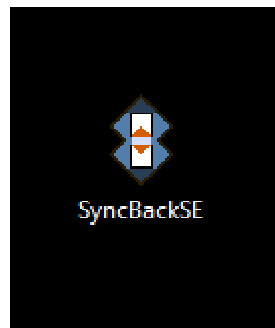


SyncBackSE Setup Guide

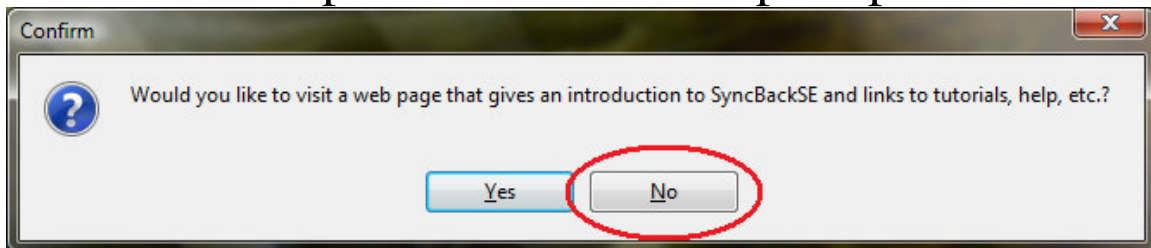
Note: All the pictures in this guide have had red highlights added to them to show you where you need to make changes.

Step One: Opening SyncBackSE



Locate and double click on the SyncBackSE icon located on your desktop.

Step Two: Information prompt



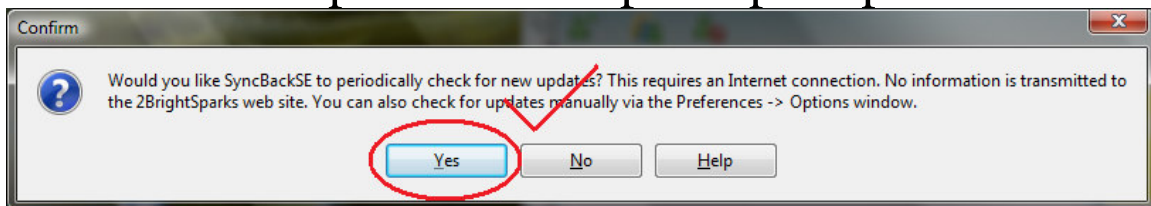
Simply hit no at this prompt.

Step Three: The serial number screen



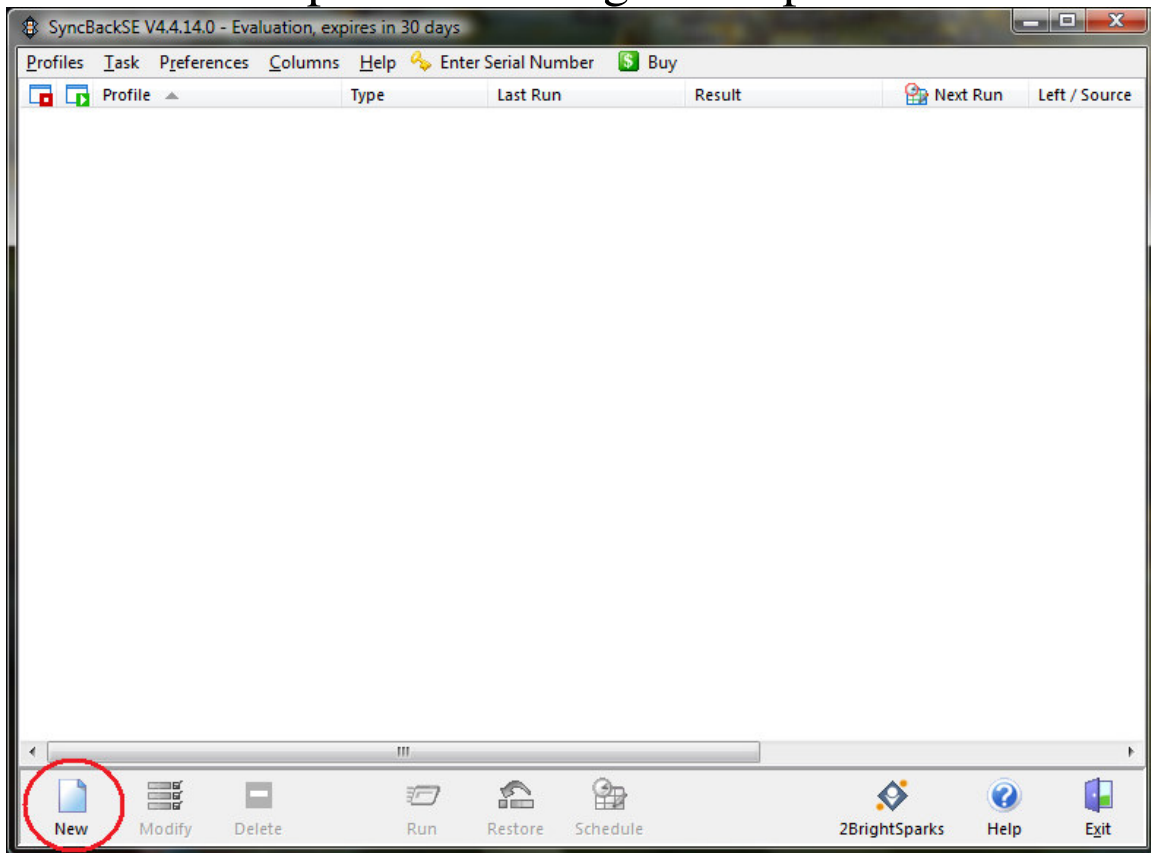
1. Check the box "Don't remind me again until 7 days before the trial expires".
2. Press the "Evaluate" button.

Step Four: The update prompt



Click the "yes" button to allow SyncBackSE to periodically check for updates.

Step Five: Adding a new profile



Hit the "new" button to start creating your profile.

Step Six: Naming the profile

Creating A New Profile

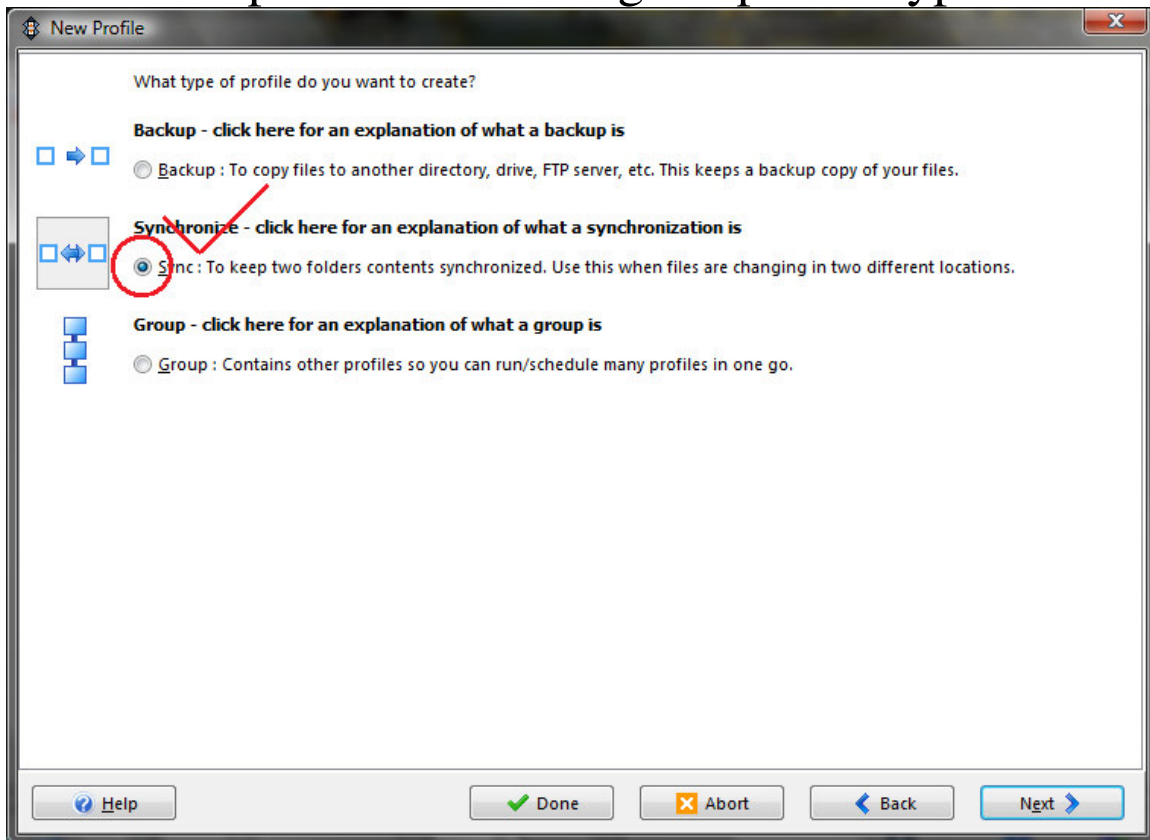
You will now be asked a series of simple questions on what it is you want the profile to do. To continue onto the next step press the Next button in the lower-right of this window, or press the Enter key. You can skip all the steps, except providing a profile name, by press the Done button at the bottom of this window. For help press the Help button in the lower-left of this window, or press the F1 key.

Enter a name that describes the task you want to achieve e.g. Backup Photos. You may rename your profile later.

Help Abort Back Next

Enter a descriptive name of your task here. For example, if you are using your space to back up all the photos you have in you're my Documents folder, you may want to name it Photo Backup.

Step Seven: Selecting the profile type



Select Sync on this screen. This is the most common and feature complete profile type.

Step Eight: Entering the server information

Do you want to backup/sync with an FTP server?

No FTP
 No, I am not going to use an FTP server

Sync with an FTP server
 Yes, I want to sync my files with an FTP server

FTP Server Connection Details

Copy settings from:

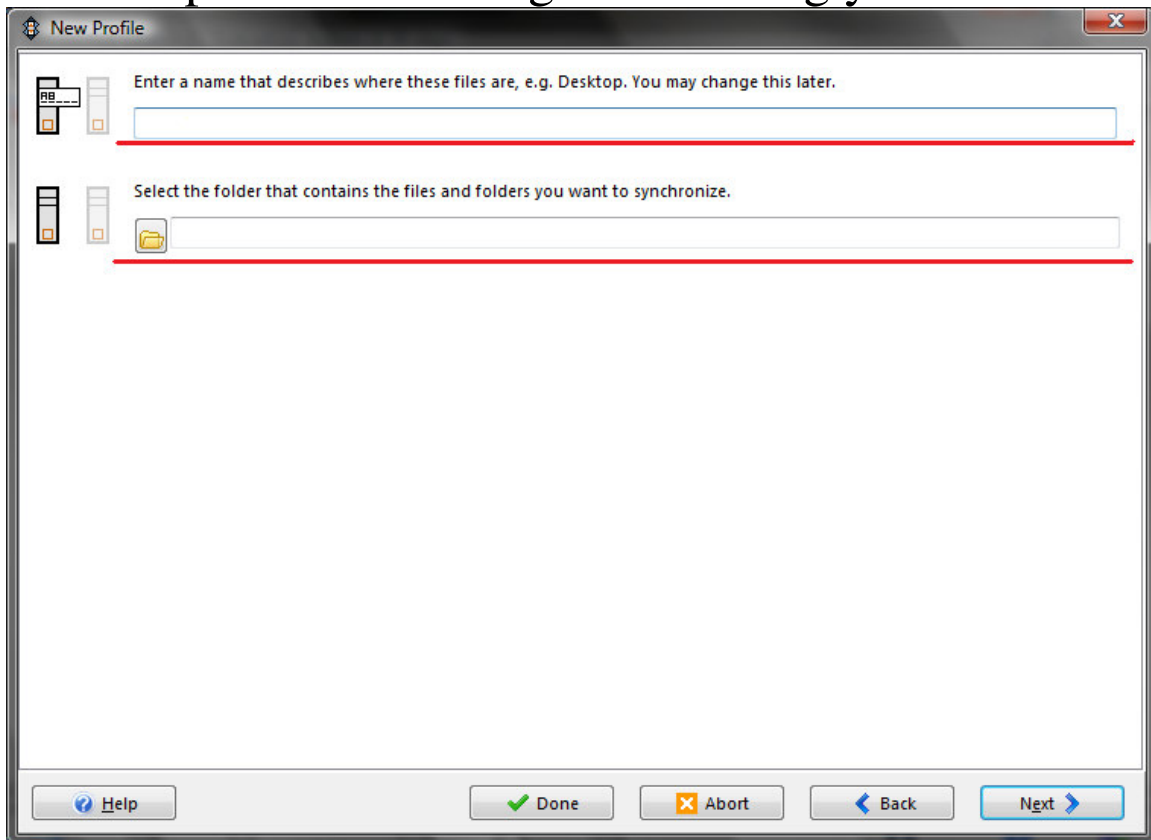
Hostname:

Username:

Password:

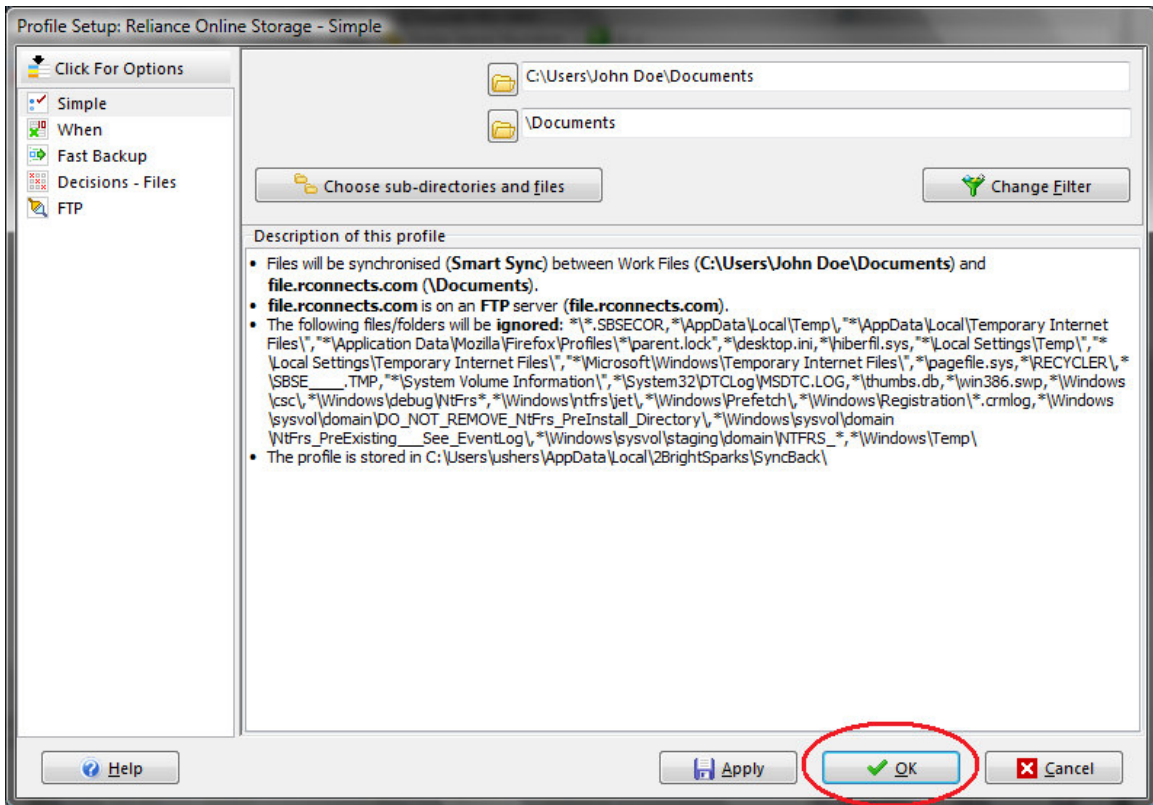
1. Select "Sync with an FTP Server"
2. Enter storage1.rconnects.com under Hostname
3. Enter the user name you signed up with under Username.
4. Enter the password you signed up with under Password.

Step Nine: Selecting and labeling your files



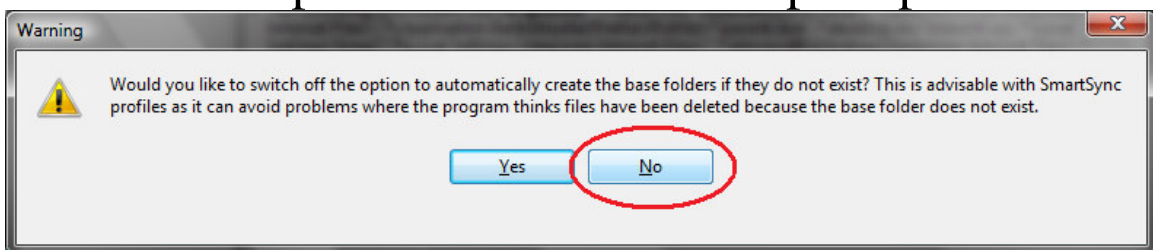
1. Enter a description of the files you are storing. We suggest using the name you came up with for step four.
2. Select the files that you want to store.

Step Ten: Profile setup



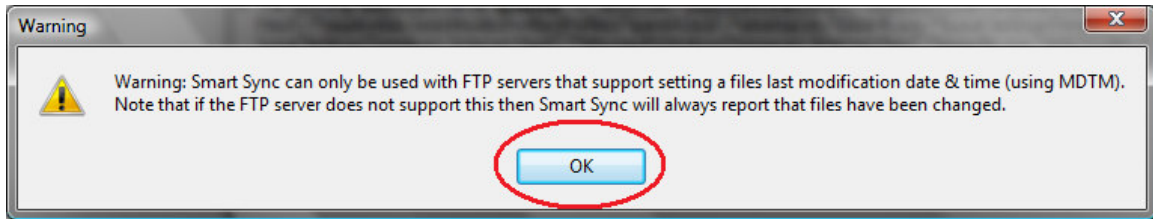
This is simply a confirmation page with all the settings you have previously entered. Simply hit ok.

Step Eleven: Base folders prompt



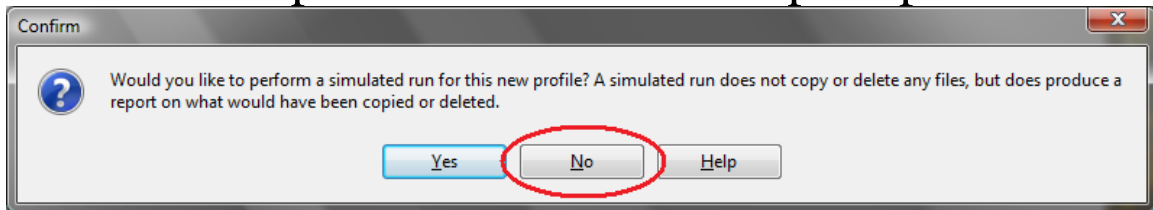
Hit no at this prompt.

Step Twelve: Warning Dialog



Just hit ok here.

Step Thirteen: Simulation prompt



A simulation is not necessary, so you can hit no here.